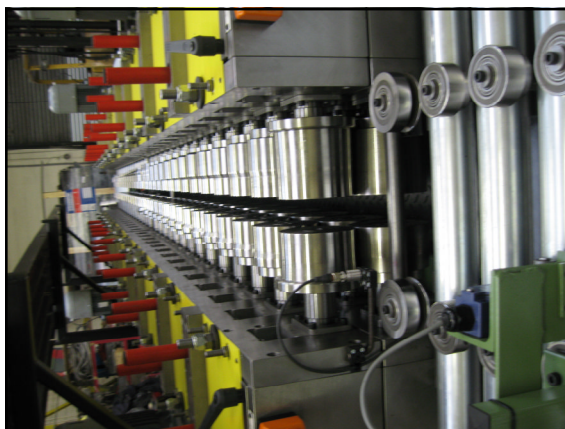


28 Pass Duplex CNC Rollformer for the Production of Modular Building Panels (150-1000 Wide)



Performance

Line speed : 6 components / min
: subject to punching.

Max component length : 4 metres

Coil - 0.7mm Plastisol Coated Mild Steel

F2(50)-28-DUPLEX CNC SERVO ROLLFORMER

A 28 pass duplex CNC rollformer with 50mm diameter shafts. Fully variable speed drive on rollformer sections, with drive transmitted to the forming heads via four drive geared motor units on either side of the machine.

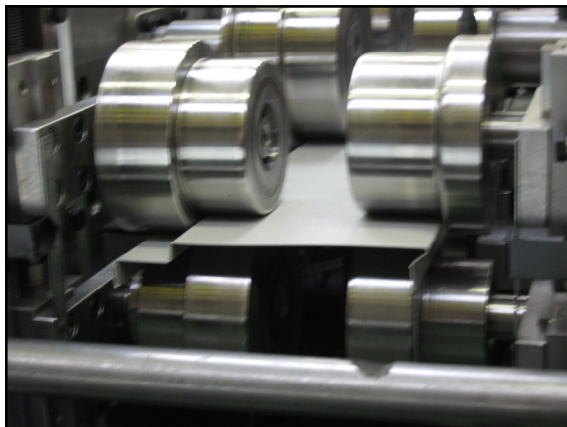
The top rolls are all adjustable and are individually set for the required rolling pressure and the whole top bank can be adjusted for pressure all together via a jacking feature.

Each side of the machine has a set of form tooling. Width adjustment on this machine is achieved automatically via servo motors controlled by the software system and adjust to the desired product as it is called for. Again this adjustment takes place at the touch of a button.

An CNC entry guide assembly is mounted prior to the rollforming head section. This guides the strip coming from the conveyor and ensures it is presented correctly to the forming passes.



28 Pass Duplex CNC Rollformer for the Production of Modular Building Panels (150-1000 Wide)



LINE CONTROLS

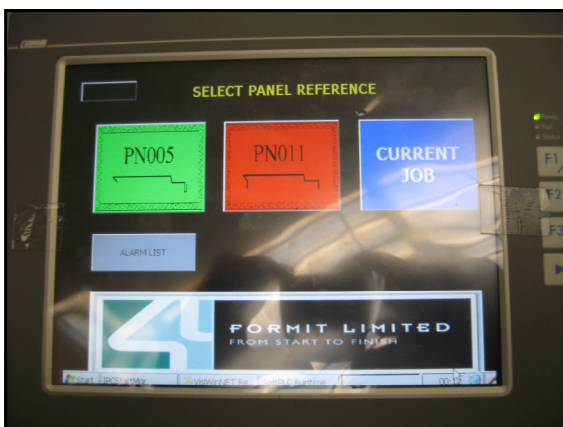
The line control system accepts an information packet presented to it by the customers SCADA software system (if required).

The Software system will Fully Automatically set the Rollformer for it's required width via Servo Motors. The software will also give production data back to the office (if required).

This machine resides within the customers production line & produces the flat interlocking panels for the foaming press.

Electrical Controls for the machine are housed in appropriate panel enclosures at the rear of the line, with the main control desk situated at the front of the line.

Wiring between machines and enclosures will be via in-floor trunking.

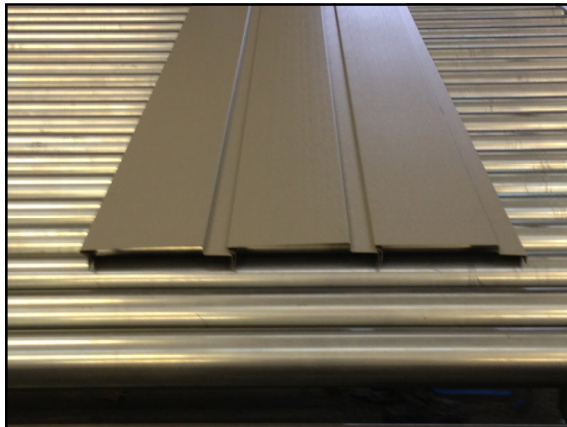
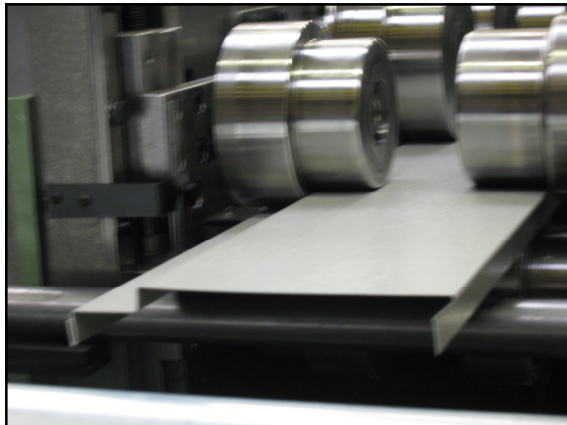


CURRENT JOB IS @1n MAIN

CENTRE SUPPORT:
 STRIP WIDTH:

| | CURRENT POSITION | SETPOINT | |
|------------------|--|--|----------------|
| FRONT GUIDE: | <input type="text" value="-00000.0 mm"/> | <input type="text" value="-00000.0 mm"/> | GO TO SETPOINT |
| BACK GUIDE: | <input type="text" value="-00000.0 mm"/> | <input type="text" value="-00000.0 mm"/> | GO TO SETPOINT |
| FORMER 1: | <input type="text" value="-00000.0 mm"/> | <input type="text" value="-00000.0 mm"/> | GO TO SETPOINT |
| FORMER 2: | <input type="text" value="-00000.0 mm"/> | <input type="text" value="-00000.0 mm"/> | |
| FORMER 2 OFFSET: | | <input type="text" value="-00000.0 mm"/> | |
| PRODUCT COUNTER: | <input type="text" value="-0000.0 pcs"/> | <input type="text" value="000.0 pcs"/> | |

28 Pass Duplex CNC Rollformer for the Production of Modular Building Panels (150-1000 Wide)



FULLY CE GUARDED INSTALLATION

When the machine was completed it was then installed onto the customer site by Formit installation engineers and fully perimeter guarded with full height mesh guarding incorporating interlocked doors and light curtains for full CE safety.

This ensures the machinery is installed in the correct manner and the installation team ensures the machine guarding is working effectively.

